



GPR142 Polyclonal Antibody

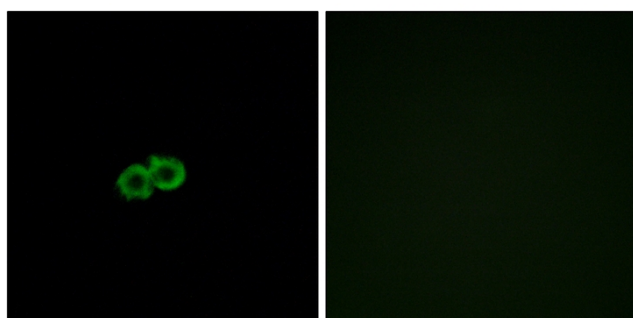
Catalog No	YP-Ab-13301
Isotype	IgG
Reactivity	Human;Rat;Mouse;
Applications	WB;IF;ELISA
Gene Name	GPR142
Protein Name	Probable G-protein coupled receptor 142
Immunogen	The antiserum was produced against synthesized peptide derived from human GPR142. AA range:1-50
Specificity	GPR142 Polyclonal Antibody detects endogenous levels of GPR142 protein.
Formulation	Liquid in PBS containing 50% glycerol, 0.5% BSA and 0.02% sodium azide.
Source	Polyclonal, Rabbit,IgG
Purification	The antibody was affinity-purified from rabbit antiserum by affinity-chromatography using epitope-specific immunogen.
Dilution	Western Blot: 1/500 - 1/2000. Immunofluorescence: 1/200 - 1/1000. ELISA: 1/10000. Not yet tested in other applications.
Concentration	1 mg/ml
Purity	≥90%
Storage Stability	-20°C/1 year
Synonyms	GPR142; PGR2; Probable G-protein coupled receptor 142; G-protein coupled receptor PGR2
Observed Band	51kD
Cell Pathway	Cell membrane; Multi-pass membrane protein.
Tissue Specificity	Exclusively expressed in the central nervous system, most abundantly in the ventrolateral region of caudate putamen, the habenular nucleus, the zona incerta, and the medial mammillary nucleus.
Function	function:Orphan receptor.,similarity:Belongs to the G-protein coupled receptor 1 family.,tissue specificity:Exclusively expressed in the central nervous system, most abundantly in the ventrolateral region of caudate putamen, the habenular nucleus, the zona incerta, and the medial mammillary nucleus.,
Background	GPR142 is a member of the rhodopsin family of G protein-coupled receptors (GPRs) (Fredriksson et al., 2003 [PubMed 14623098]).[supplied by OMIM, Mar 2008],
matters needing attention	Avoid repeated freezing and thawing!



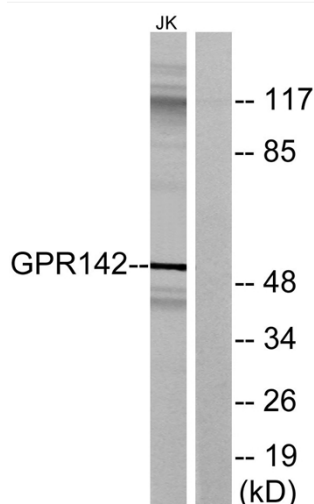
Usage suggestions

This product can be used in immunological reaction related experiments. For more information, please consult technical personnel.

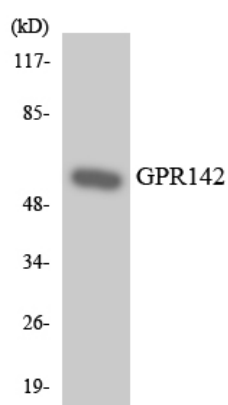
Products Images



Immunofluorescence analysis of A549 cells, using GPR142 Antibody. The picture on the right is blocked with the synthesized peptide.



Western blot analysis of lysates from Jurkat cells, using GPR142 Antibody. The lane on the right is blocked with the synthesized peptide.



Western blot analysis of the lysates from HeLa cells using GPR142 antibody.